



Exercise 14: Multiview Sketches
Developed by Project Lead the Way

Multiview Sketches

(Developed by Project Lead The Way)

Procedure

In this activity, you will develop your ability to see and sketch objects as a series of related two-dimensional views. Understanding and using the different line conventions, discussed earlier in this lesson, will help when creating these views.

Study the image below. The various surfaces of the object are identified by letters on the isometric drawing and by numbers on the multiview drawing. In the table, write the number that corresponds with the lettered surface in each of the top, front, and right side views.

	Top	Front	Side
A	9	3	21
B			
C			
D			
E			
F			
G			
H			

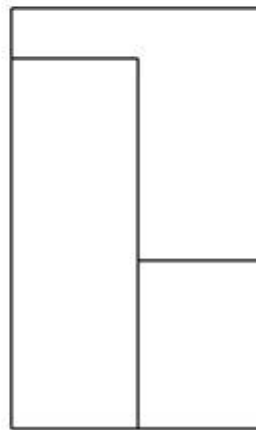
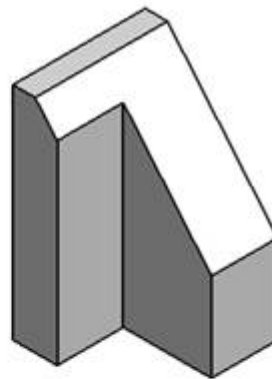
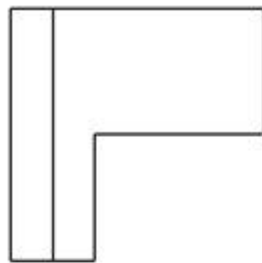




Exercise 14: Multiview Sketches

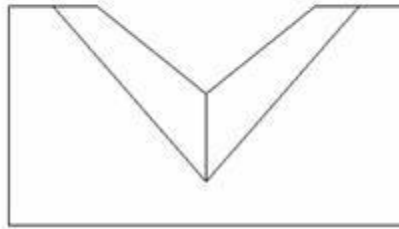
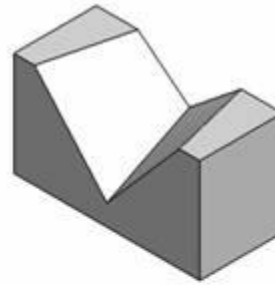
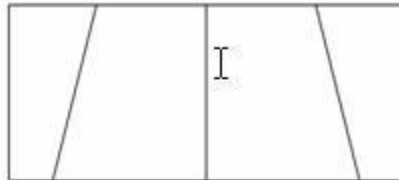
Developed by Project Lead the Way

Study the images below. Use points, construction lines, hidden lines, center lines and object lines where applicable to sketch the missing view. DO NOT ERASE YOUR POINTS AND CONSTRUCTION LINES.





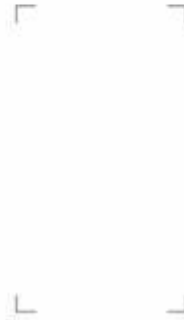
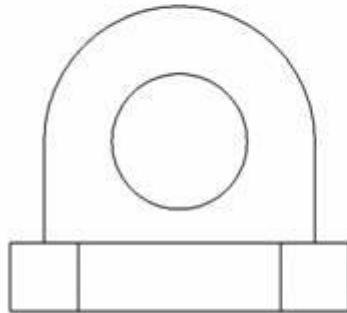
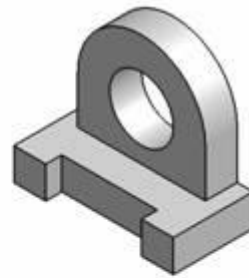
Exercise 14: Multiview Sketches
Developed by Project Lead the Way





Exercise 14: Multiview Sketches

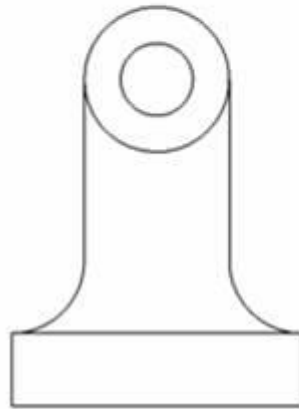
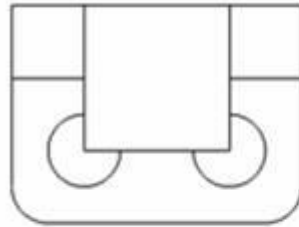
Developed by Project Lead the Way





Exercise 14: Multiview Sketches

Developed by Project Lead the Way

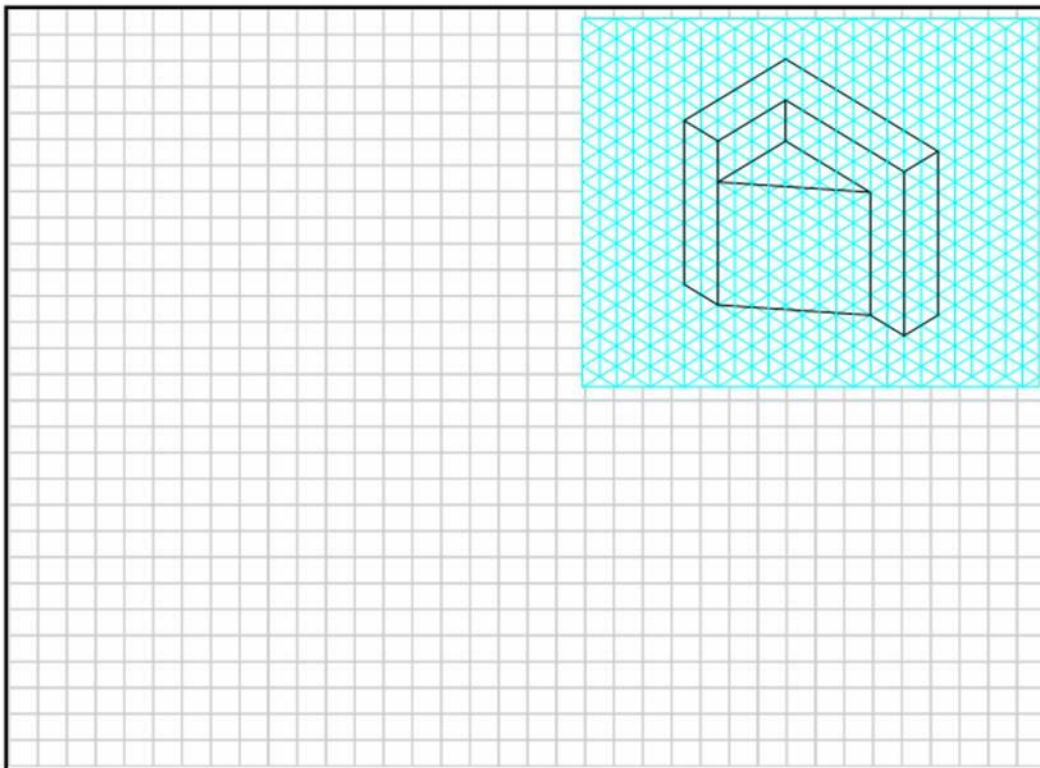




Exercise 14: Multiview Sketches

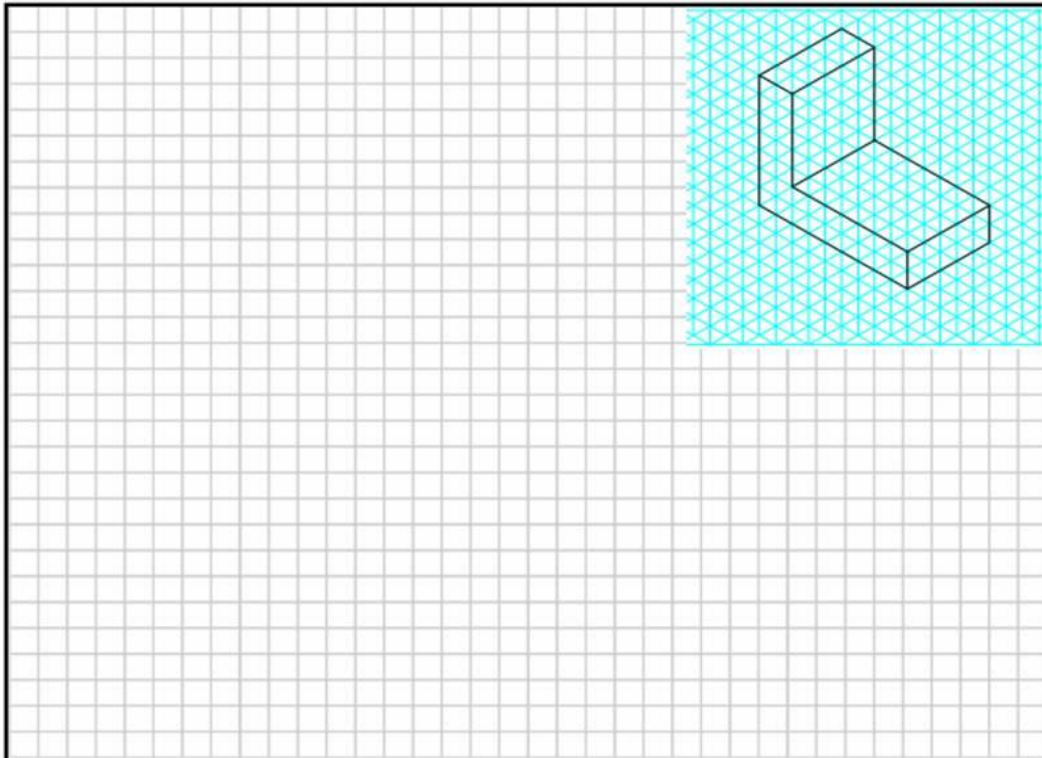
Developed by Project Lead the Way

Study the isometric views in the following pages. Use points, hidden lines, construction lines, and object lines to sketch the three common views used to explain the object. The scale is 1:1 which means each grid line on the isometric view represents a grid line on the orthographic grid. **DO NOT ERASE YOUR POINTS AND CONSTRUCTION LINES.**



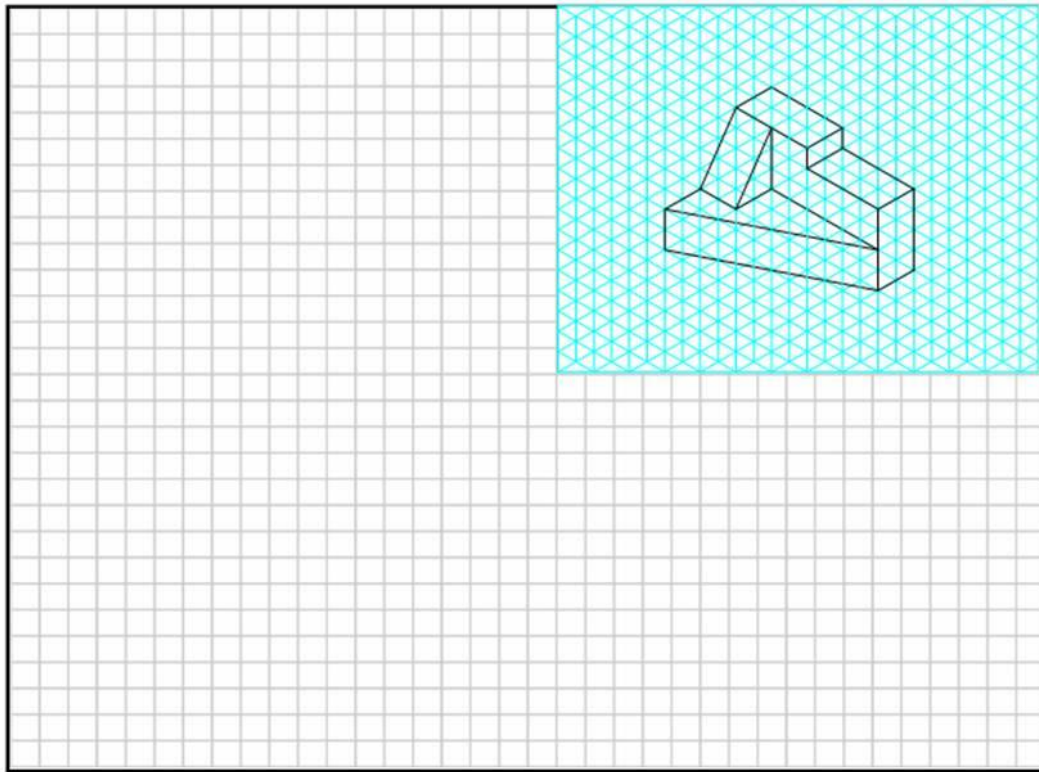


Exercise 14: Multiview Sketches
Developed by Project Lead the Way





Exercise 14: Multiview Sketches
Developed by Project Lead the Way





Exercise 14: Multiview Sketches

Developed by Project Lead the Way

SAFETY DISCLAIMER:

M-SAMC educational resources are in no way meant to be a substitute for occupational safety and health standards. No guarantee is made to resource thoroughness, statutory or regulatory compliance, and related media may depict situations that are not in compliance with OSHA and other safety requirements. It is the responsibility of educators/employers and their students/employees, or anybody using our resources, to comply fully with all pertinent OSHA, and any other, rules and regulations in any jurisdiction in which they learn/work. M-SAMC will not be liable for any damages or other claims and demands arising out of the use of these educational resources. By using these resources, the user releases the Multi-State Advanced Manufacturing Consortium and participating educational institutions and their respective Boards, individual trustees, employees, contractors, and sub-contractors from any liability for injuries resulting from the use of the educational resources.

DOL DISCLAIMER:

This product was funded by a grant awarded by the U.S. Department of Labor's Employment and Training Administration. The product was created by the grantee and does not necessarily reflect the official position of the U.S. Department of Labor. The Department of Labor makes no guarantees, warranties, or assurances of any kind, express or implied, with respect to such information, including any information on linked sites and including, but not limited to, accuracy of the information or its completeness, timeliness, usefulness, adequacy, continued availability, or ownership.

RELEVANCY REMINDER:

M-SAMC resources reflect a shared understanding of grant partners at the time of development. In keeping with our industry and college partner requirements, our products are continuously improved. Updated versions of our work can be found here: <http://www.msamc.org/resources.html>.

